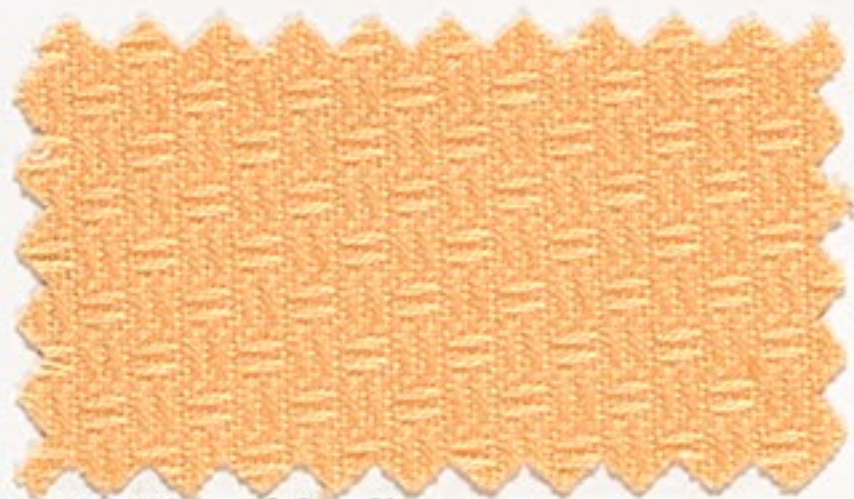


Popkorn (Seite 2 von 2)

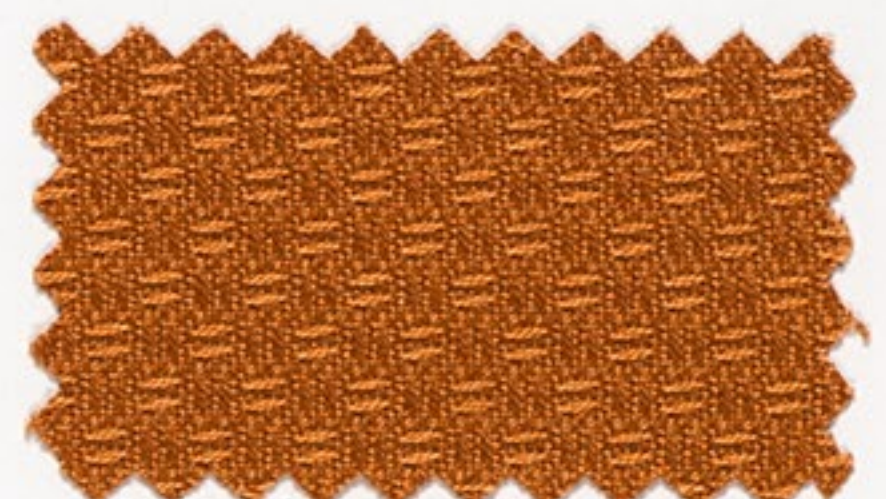
100 % Baumwolle
176 cm breit, mercerisiert, pflegeleicht



1940 goldgelb (311)



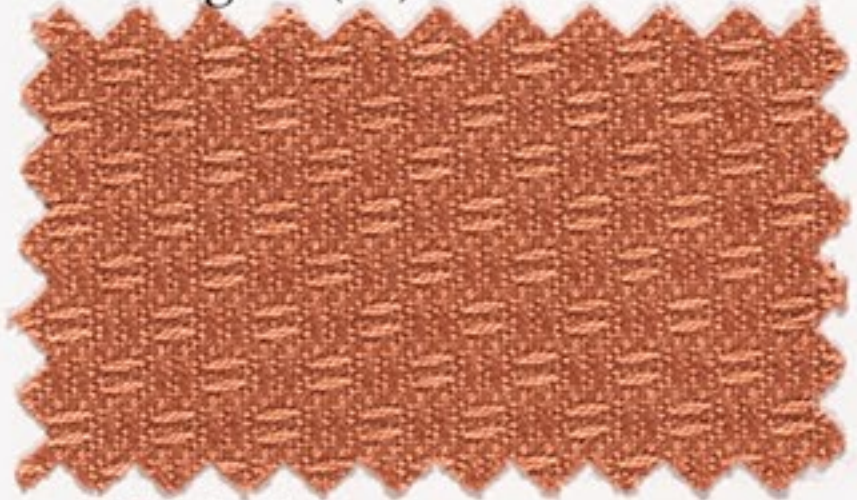
1941 gold (363)



1942 goldbraun (365)



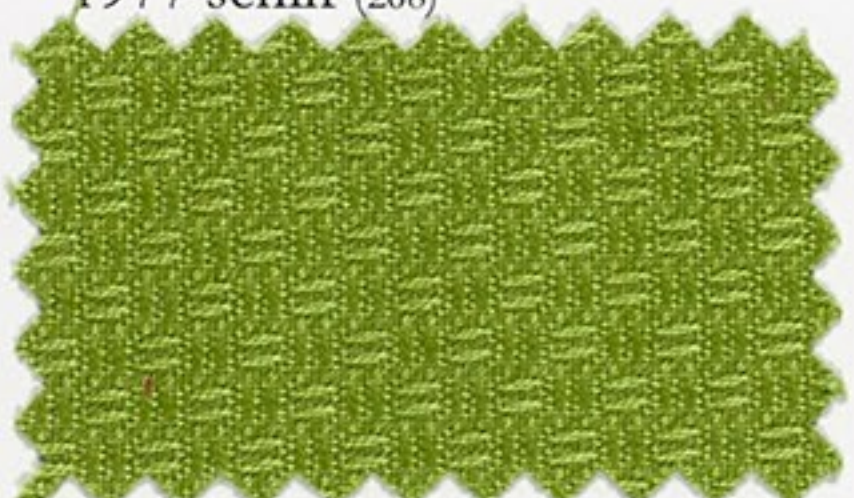
1977 schilf (268)



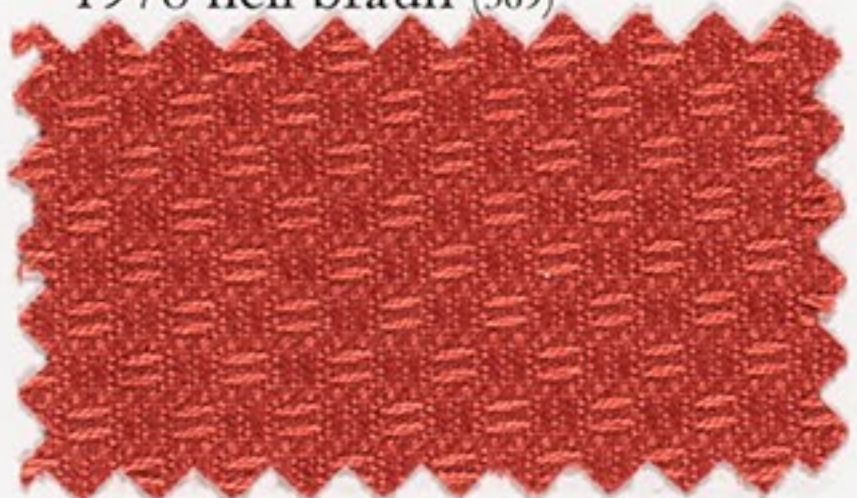
1978 hell braun (369)



1979 braun (370)



1955 grün (266)



1968 terra cotta (339)



1975 weinrot (44)



1935 seesand (391)



1936 sandelholz (392)



1937 asche (393)